

**CURVE NO. 1**  
 P.I. STA. 871+31.26  
 $\Delta = 10^\circ 38' 50''$   
 $\Delta c = 08^\circ 04' 50''$   
 $Dc = 01^\circ 28' 00''$   
 $Rc = 3906.53'$   
 $Tc = 275.93'$   
 $Lc = 550.95'$   
 $E = 9.73'$

**SPIRAL NO. 1A**  
 $Ls = 350.00'$   
 $\theta_s = 05^\circ 52' 44''$   
 $P = 2.99'$   
 $Tl = 206.70'$   
 $T2 = 144.38'$

**CURVE NO. 2**  
 P.I. STA. 879+81.03  
 $\Delta = 29^\circ 53' 03''$   
 $\Delta c = 21^\circ 26' 20''$   
 $Dc = 04^\circ 49' 33''$   
 $Rc = 1187.24'$   
 $Tc = 224.75'$   
 $Lc = 444.25'$   
 $E = 21.09'$

**CURVE NO. 9**  
 P.I. STA. 881+38.53  
 $\Delta = 54^\circ 52' 24''$   
 $\Delta c = 41^\circ 22' 24''$   
 $Dc = 04^\circ 30' 00''$   
 $Rc = 1273.24'$   
 $Tc = 480.78'$   
 $Lc = 919.41'$   
 $E = 87.75'$

**SPIRAL NO. 9A**  
 $Ls = 600.00'$   
 $\theta_s = 13^\circ 30' 00''$   
 $P = 11.76'$   
 $K = 299.45'$   
 $LT = 401.17'$   
 $ST = 201.06'$

**CURVE NO. 14**  
 P.I. STA. 879+40.30  
 $\Delta = 44^\circ 44' 19''$   
 $\Delta c = 19^\circ 59' 19''$   
 $Dc = 04^\circ 30' 00''$   
 $Rc = 1273.24'$   
 $Tc = 224.38'$   
 $Lc = 444.19'$   
 $E = 19.62'$

**SPIRAL NO. 14A**  
 $Ls = 600.00'$   
 $\theta_s = 13^\circ 30' 00''$   
 $P = 11.76'$   
 $K = 299.45'$   
 $LT = 401.77'$   
 $ST = 201.06'$

FOR ESTIMATED QUANTITIES  
 SEE SHEET NO. 40  
 FOR PROFILES  
 LINE "W.B." SEE SHEET NO. 47  
 LINE "E.B." SEE SHEET NO. 43  
 STORM SEWER P-1  
 SEE SHEET NO. 231  
 UNDERDRAIN DETAILS  
 SEE SHEET NO. 248

FED. RD. DIVISION	STATE	PROJECT	
2	OHIO		

29

CUYAHOGA COUNTY  
 CUY-71-15.06

BEGIN PROJECT STA. 870+00.00 S.L.M. 15.06  
 E N D PROJECT STA. 982+16.03 S.L.M. 17.20

CITY OF CLEVELAND

CULVERT N° CUY-71-15.12  
 SEE SHEET N° 226

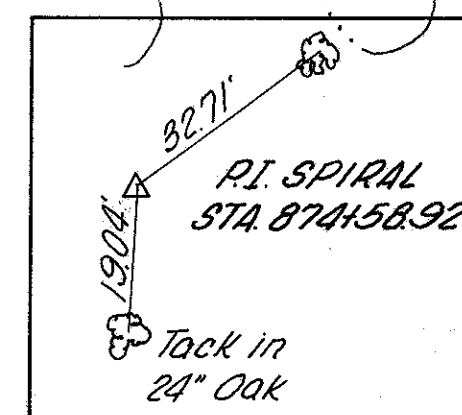
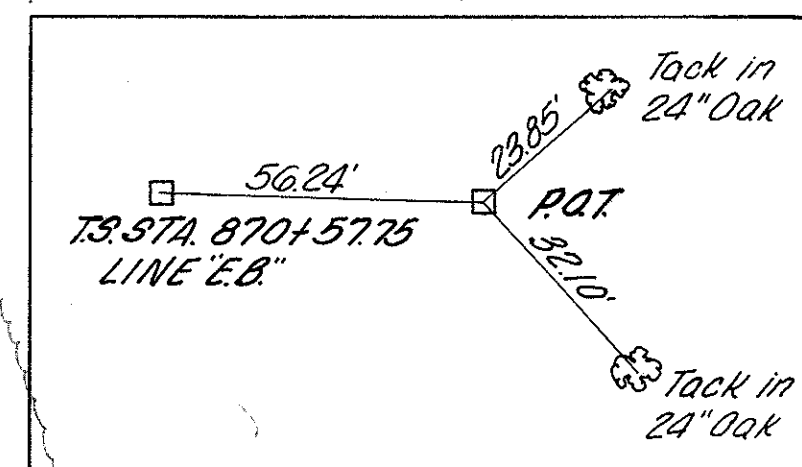
CFN 180711512  
 SLM 15.12, 36"  
 SEE SHEET 226

CFN 180711527  
 SLM 15.26, 36"  
 SEE SHEET 231

CFN 180711510  
 SLM 15.10, 36"  
 SEE SHEET 225

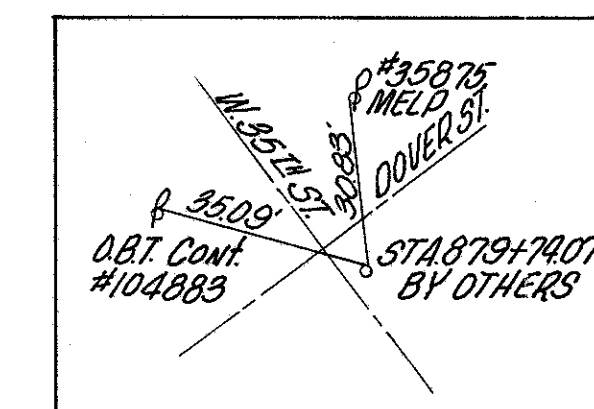
CULVERT N° CUY-71-15.10  
 SEE SHEET N° 225

CFN 180711511  
 SLM 15.10, 36"  
 CONSTRUCTED  
 UNDER CUY-71-14.16



BENCH MARK #41  
 Spike in 18" Elm Tree,  
 51' Lt. Sta. 869+39 "W.B."  
 Elev. 709.48

BENCH MARK #42  
 Spike in Telegraph Pole,  
 114' Lt. Sta. 874+25 "W.B."  
 Elev. 701.64



STA 870+00 TO 880+00